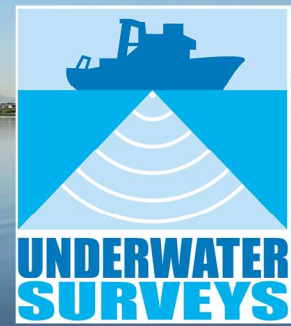


Enduro

Unmanned Surface Vessel
for Singlebeam Surveys



Built for singlebeam echosounder surveys of small inland dams and ponds where it is not practical or is unsafe to launch a full-size manned survey boat. Capable of longer range and duration surveys.

The Unmanned Surface Vessel (USV) is remotely-piloted or can follow planned survey grids on AutoPilot while high-accuracy RTK GPS position and echosounder depths are logged in real-time to the operator's Control Station (PC).

The USV is all-electric with zero emissions and man-portable being 1.7m long and weighing only 40kg.



The image displays two software windows. The left window, titled 'Navigation - Navigation Display', shows a satellite map of a coastal area with a yellow and red survey grid overlaid. The right window, titled 'ECHOLLOGGER Echosounder/Altimeter Control Program', shows various control parameters and a real-time echosounder data plot. The plot shows depth (0.5m to 2.0m) on the y-axis and time (20150731 13:04:07.38) on the x-axis. The plot shows a series of vertical lines representing depth measurements over time. The interface also includes a 'Data Playback' section with a 'Select input data file' button and a 'Data Scale' dropdown menu set to 'Linear Scale'. The 'Data Output' section shows 'Max Amplitude' and a 'Color Palette' dropdown set to 'Rainbow (Black Backgroud)'. The 'Send Command' section shows '>> Send Command: [Begin 10.0]' and '>> Send Command: [Begin 20.0]'. The 'Check input data log file' section shows 'C:\DataEcho\20150731_125008_EcholLogger450Hz_ID_0000.log'.

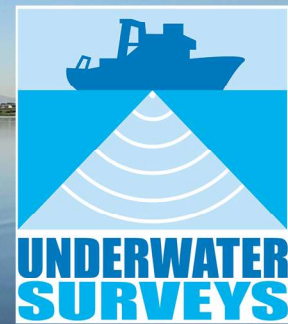
Survey Solutions by:

Underwater Surveys (Pty) Ltd
Capricorn Park, Cape Town
Tel: 021-7096000
Email: info@underwatersurveys.com

www.underwatersurveys.com

Enduro

Unmanned Surface Vessel
for Singlebeam Surveys



Specifications

General:

- Length 1.7m
- Beam 0.7m
- Weight 40kg*
- Electric propulsion (dual-drive)
- Sealed lead acid or Lithium batteries

Equipment installed on the USV:

- RTK GPS Positioning
- 200kHz Hydrographic Echosounder
- Radio Control Receiver and controller
- AutoPilot with dedicated datalink
- Realtime data transfer via Wireless networking
- Onboard live camera for remote piloting

Equipment Ashore:

- Control Station with QPS Qinsy (Laptop)
- Radio Control
- RTK GPS Base Station
- Wireless datalink and networking
- Inverter System

*USV weight varies with battery payload

Survey Solutions by:

Underwater Surveys (Pty) Ltd
Capricorn Park, Cape Town
Tel: 021-7096000
Email: info@underwatersurveys.com

www.underwatersurveys.com

